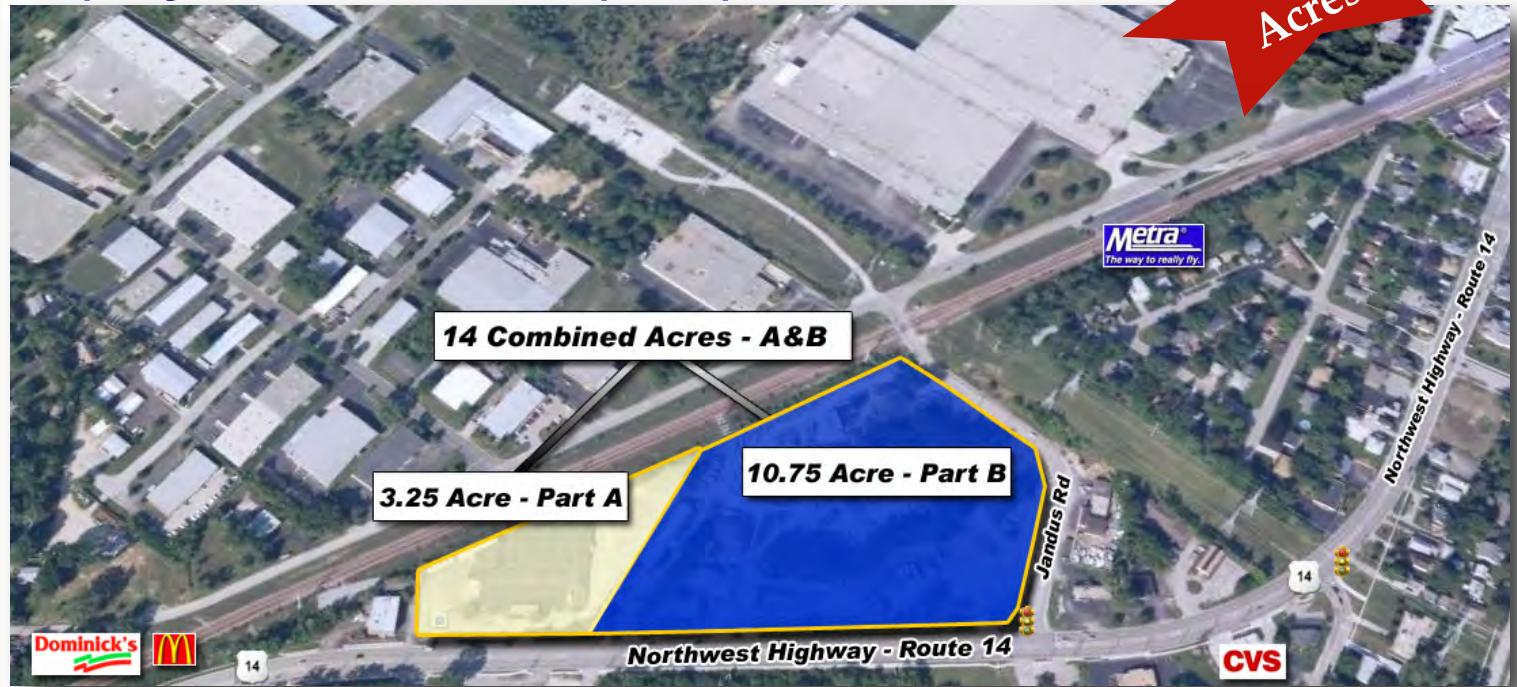


For Sale Cary, Illinois

Available Land

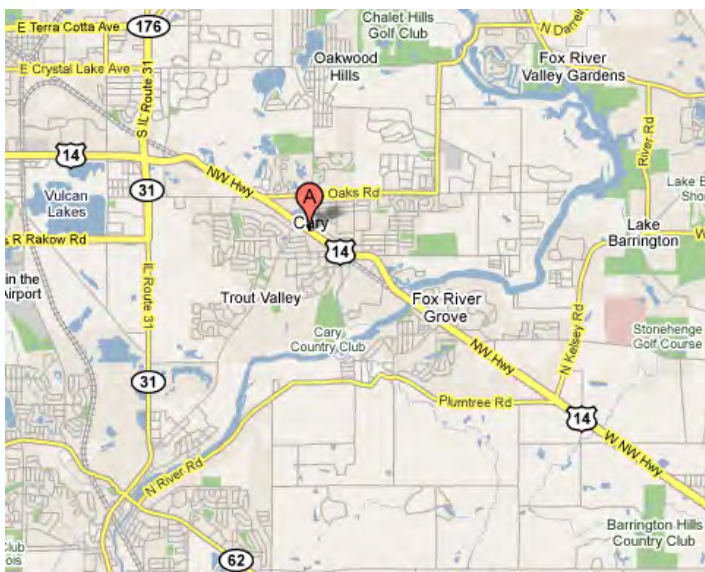
Property available at \$19.99 per sq. ft

14+
Acres



DESCRIPTION OF PROPERTY:

Upscale Retail Development!! 14 Acres with 1,485 feet of frontage on U.S. Rte. 14/Northwest Hwy. in Cary, Illinois. Perfect for Major Anchor with Out-lot(s). Property is located in a TIF District adjacent to lighted intersection. Strategically located 40 miles NW of the Loop, Cary is at the crossroads of McHenry, Cook, Lake, and Kane counties. O'Hare airport is only 45 minutes away. Nearby access to Northwest Tollway /Interstate Route 90, local commuter rail service, and good arterial roadways have helped Cary and neighboring villages develop into comfortable residential communities.



Property Details:

- * 10.75 Acres (Part B) & 3.25 Acres (Part A).
- * Properties can be package together or individually
- * Perfect for Major Anchor with Out-lot(s)
- * Over 1485 feet of frontage on NW Hwy/Rte 14'
- * 34,600 Cars per day
- * Located in a TIF District
- * Population: 100,000 + within 5 mile radius
- * Income: \$100,000 + per average household

DIRECTIONS:

Route 14 / Northwest Hwy. just north of the Fox River. West side of highway.

Ted Wagner
twagner@mc.net
847-630-8920



WAGNER COMMERCIAL
www.wagnercommercial.com

All information herein is from sources deemed reliable but not guaranteed accurate.
Subject to errors, omissions, and to change of price or terms, prior to sale or lease, all without notice.